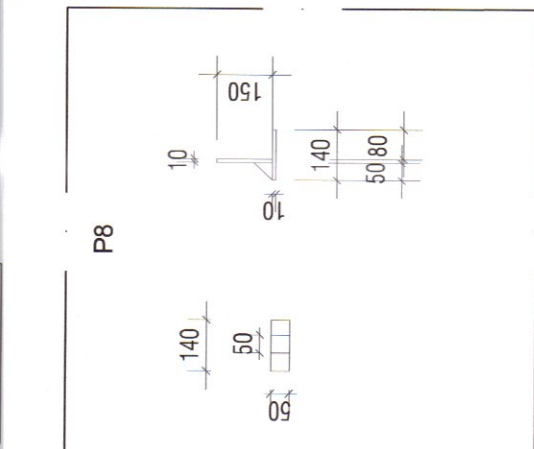
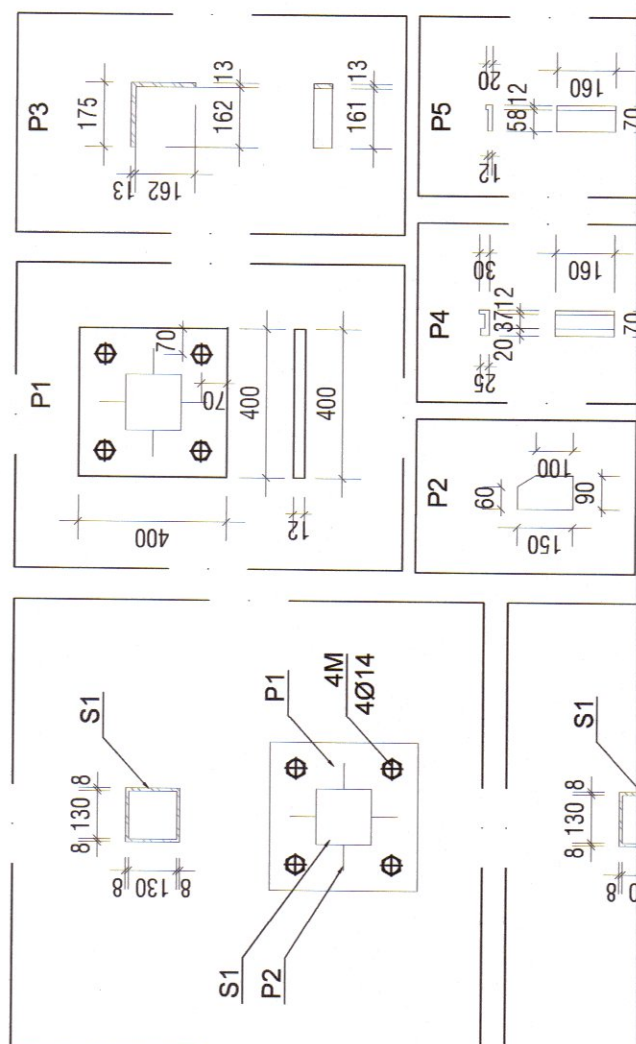


POZITIVA	ELEMENT	Bucati /total	L	G/Total	Material
			m	kg	
G1	160x82x5	6	5.300	515.16	OTEL
G2	120x64x4.4	1	5.400	58.16	
G3	160x82X5	3	3.300	160.38	
G4	120x64x4.4	1	5.900	63.54	
G5	120x64x4.4	1	5.800	62.47	
G6	120x64x4.4	1	3.600	38.77	
G7	160x82x5	2	1.950	63.18	
G8	160x82x5	1	1.950	31.59	
G9	120x64x4.4	1	2.900	31.23	
G10	160x82x5	1	1.350	21.87	
TOTAL (kg)				1046	
Electrozi (1,5%) (kg)				15.70	
Grund (0,5%) (kg)				5.23	
TOTAL (tone)				1.1	

1.	NOTE TEHNICE	
2.	NOTE SUBSANSAMBLEE CONSTRUCTIEI METALICE, VOR RESPECTA URMATOARELE CONDITII:	
3.	TOATE SUDURILE VOR EXECUTATE IN FABRICA: SINGURA SUDURA EFECTUATA IN SANTIER VA FI CEAA A ELEMENTELOR B2 SI B1, B2 SI B3; B2 SI B4, B2 SI B5.	
4.	TOATE SUDURILE VOR EXECUTATE DE SUDORI CALIFICATI IN CONFORMITATE CU PROCEDURILE DE SUDURA AUTORIZATE	
5.	GROSIMEA CORDOANELOR DE SUDURA NESPECIFICATE VA FI: SUDURA IN RELIEF DE COLT; a = 0,7 x GROSIMEA MINIMA A PIESELOR CE SE IMBINA;	
6.	SUDURA CAP LA CAP: a = GROSIMEA MINIMA A PIESELOR CE SE IMBINA.	
7.	TIPUL DE PRELUCRARE AL MARGINILOR PIESELOR IN VEDEREA RESPECTARII CINGELETEI STANDARDULUI SR EN 23892.	
8.	CORDOANELE DE SUDURA SE VOR REALIZA PE TOATA LUNGIMEA CONTURULUI DE CONTACT	
9.	NIVELUL DE ACCEPTARE AL IMBINARILOR SUDATE ESTE C CONFORM NORMATIVULUI C150-96.	
10.	ELEMENTELE METALICE VOR FI GALVANIZATE, RESPECTIV PROTECTIA ANTICOROZIVA SE VA REALIZA IN CONFORMITATE CU SPECIFICATIILE PENTRU CLASA DE COROZIVITATE C2, CF. GP12/1-2013.	
11.	MATERIALELE UTILIZATE VOR AVEA CERTIFICATE DE INSPECTIE IN CONFORMITATE CU SR EN 10204, AVER CALITATEA OTELULUI VA FI S355J2.	
12.	DIMENSIONALII PRELUCRATE SE VOR INCADRA IN CLASILE DE TOLERANTA B1, B3, B5 CONFORM SR EN 22768-135 SI SR EN 22768-236.	
13.	Elementele B1, B2, B3, B4, B5 vor fi vopsite pentru mentinere in timp a metalului.	

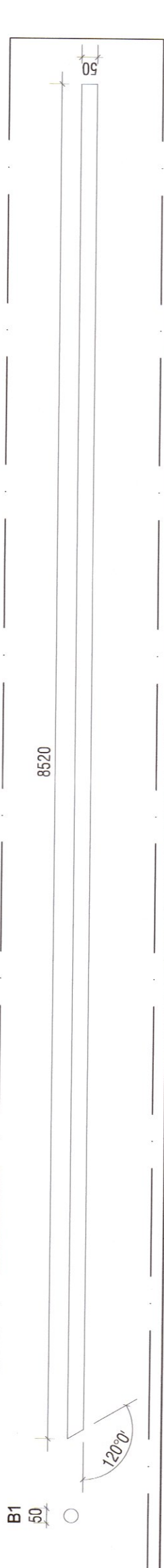
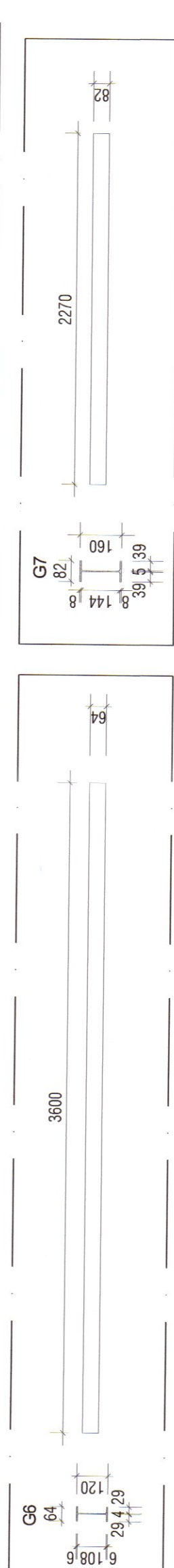
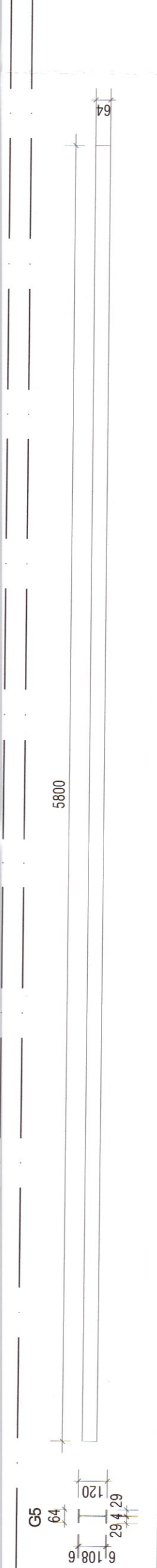
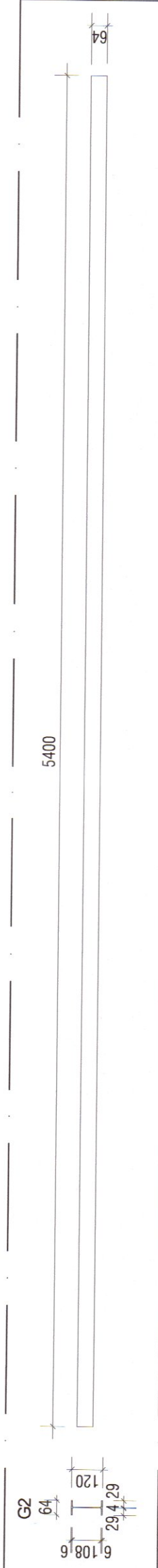
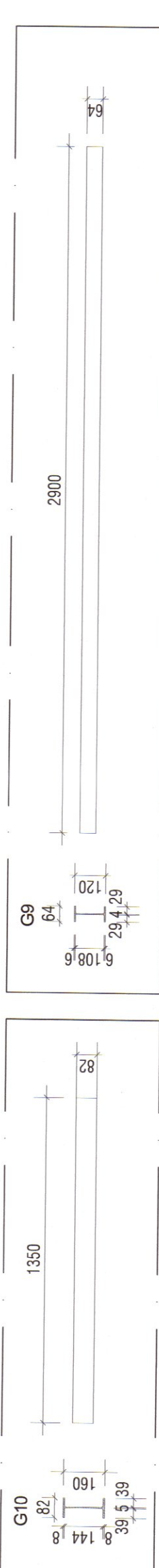
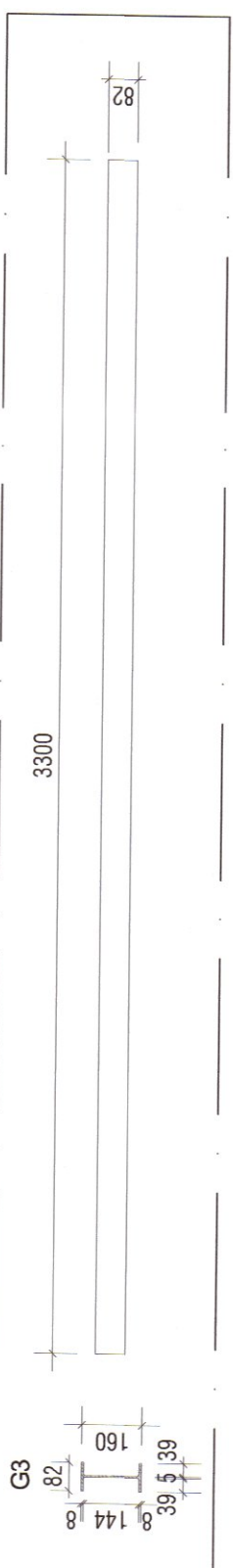
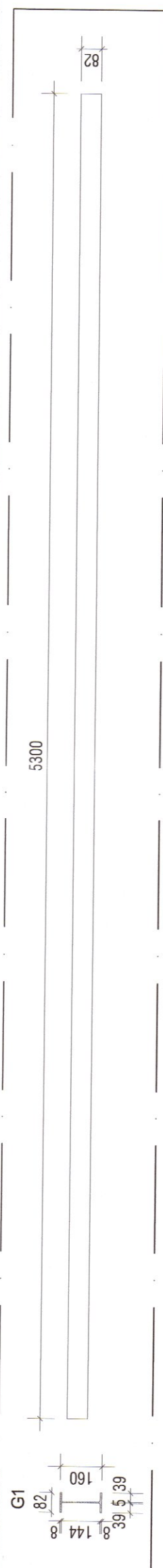
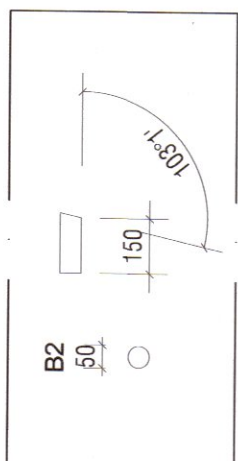
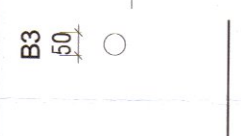
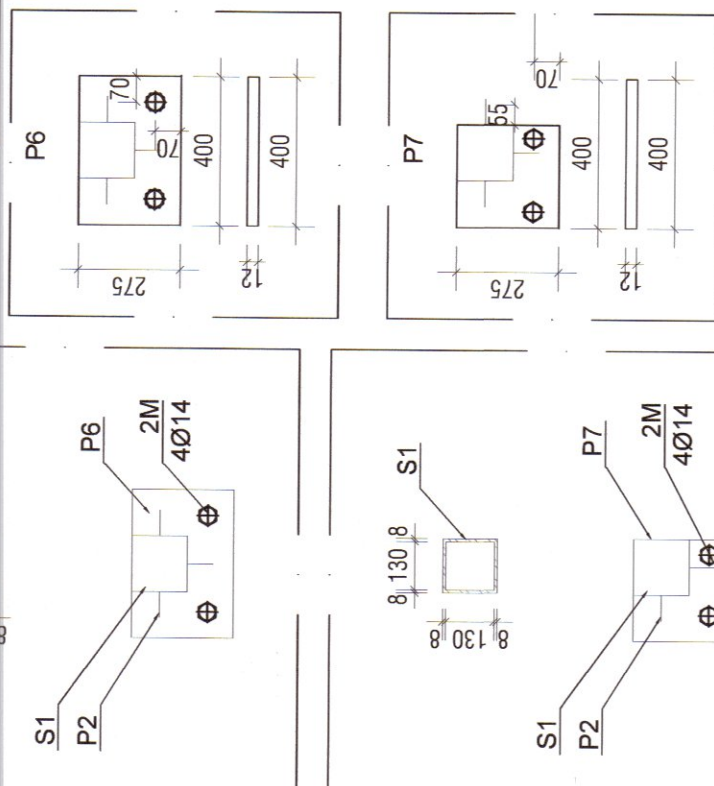


NOTA

1. IN CAZUL ZONELOR DE SCHIMBARE DIRECTE SE VOR UTILIZA PROFILE PREVAZUTE CU MACAZ, PENTRU SCHIMBAREA DIRECTIEI CARUGELOR CARE VOR FI MASURATE IN TIMPUL EXECUTIEI IN FUNCTIE DE RELEVUL REALIZAT DE FURNIZOR SI EXECUTANT;

2. SE VOR RESPECTA PREVEDERILE MENTIONATE IN CAIETUL DE SARGINI;

3. SE VOR PRE-IZOLA CU GARNITURA DE CALCIUC STALPII AFERENTI CAMEREI DE REFRIGERARE;



POZITIVA	ELEMENT	Bucat /total	L m	G/Total kg	Material
B1	Ø50x5	1	8.520	111.42	OTEL
B2	Ø50x5	6	0.150	11.77	
B3	Ø50x5	1	4.850	63.42	
B4	Ø50x5	1	2.510	32.82	
B5	Ø50x5	1	2.650	34.65	
TOTAL (kg)				254	
Electrozi (1,5%) (kg)				3.81	
Grund (0,5%) (kg)				1.27	
TOTAL (tone)				0.3	

1

3. Elementele B1, B2, B3, B4, B5 vor fi vopsite pentru protectia in timp a metalului.

1000

8

1. The first step is to identify the problem or question that needs to be answered. This involves understanding the context and the specific requirements of the task.

NOTA

1. IN CAZUL ZONELOR DE SCHIMBARE DIRECTE SE VOR UTILIZA PROFILE PREVUZUTE CU MACAZ, PENTRU SCHIMBAREA DIRECTIEI CARUGELOR CARE VOR FI MASURATE IN TIMPUL EXECUTIEI IN FUNCTIE DE RELEVUL REALIZAT DE FURNIZOR SI EXECUTANT;

2. SE VOR RESPECTA PREVEDERILE MENTIONATE IN CAIETUL DE SARGINI;

3. SE VOR PRE-IZOLA CU GARNITURA DE CALCIUCI STALPII AFERENTI CAMERII DE REFRIGERARE;

Technical drawing of a mechanical part, showing a side view and a top view. The side view (top) shows a rectangular block with a width of 140 and a height of 10. The top view (bottom) shows a rectangular block with a width of 140 and a height of 50. The drawing includes dimension lines and arrows indicating the measurements.

Technical drawing of a mechanical part, likely a bracket or support, showing dimensions and material specifications.

Dimensions:

- Overall width: 400
- Slot width: 12
- Distance from left edge to center of slot: 275
- Height: 400
- Distance from top edge to center of slot: 70

Material Specifications:

- 2M
- 4014

100

Technical drawing of a mechanical part, likely a shaft or rod, showing dimensions and tolerances.

Dimensions and Tolerances:

- Overall length: 120 mm
- Section length: 108.6 mm
- Section diameter: 6 mm
- Section diameter tolerance: ± 0.029 mm

Labels:

- G6
- G7

1. <i>Staphylococcus aureus</i>	2. <i>Staphylococcus aureus</i>	3. <i>Staphylococcus aureus</i>
---------------------------------	---------------------------------	---------------------------------

PROIECT NUMARUL: UIPS573 - 2022	FAZA PROIECT P. Th.-HdP
	
DENUMIRE PLANSĂ:	
Funcție	Nume
Gef proiect	Arh.loana Ileanu
Proiectat	Ing. Cristian Nicola
Desenat	Ing. Cristian Nicola
Data: 11.2022	Scara: 1/20
Cod desen:	UIPS573/ R02